

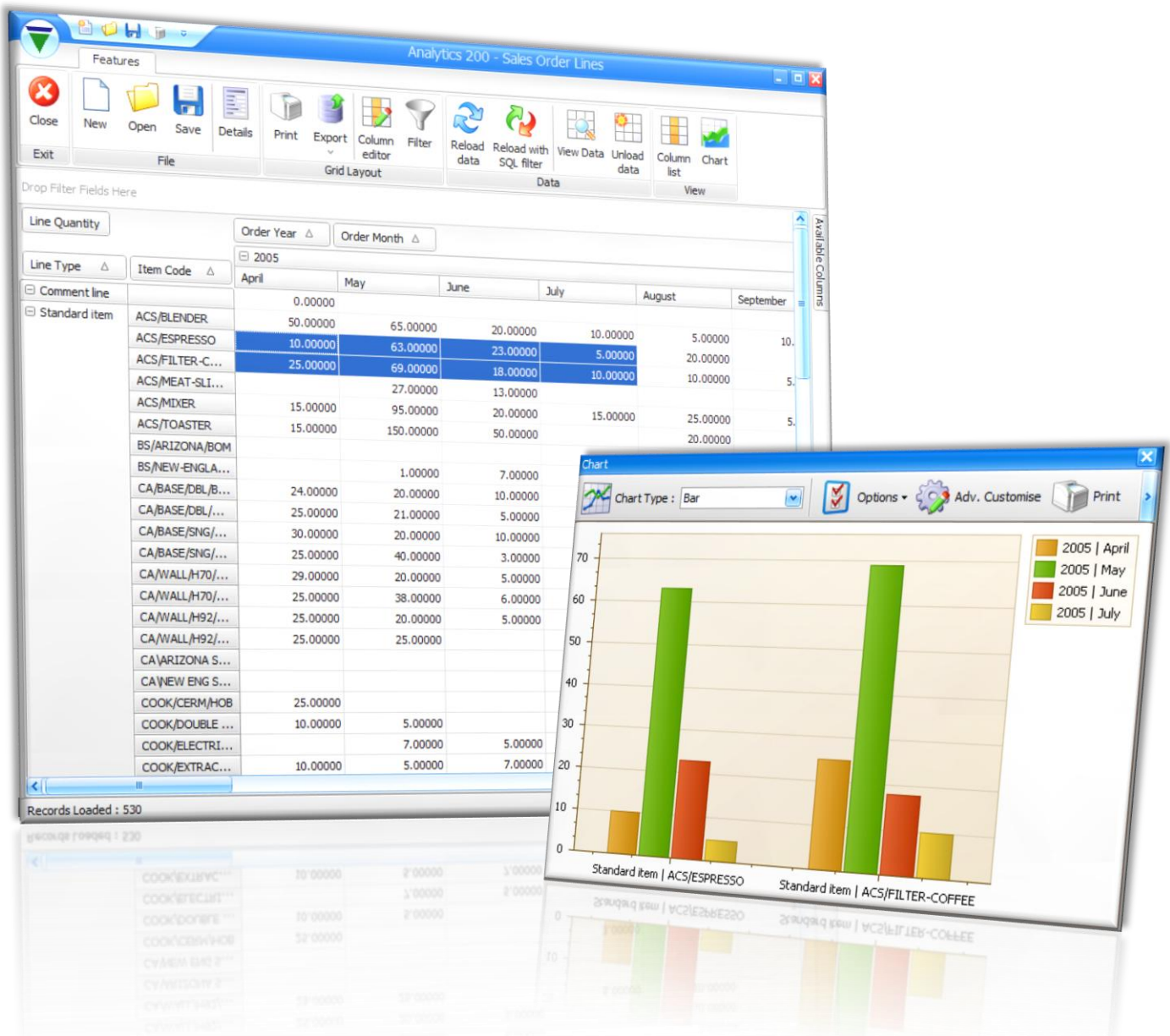
Prosys Analytics 200

Magicians, those with the fancy tricks that were supposed to pull fortunes from thin air, have moved on. Now it's back to reality. A reality that includes economic recession and for many industries slower growth and decreased profits. Not surprisingly, there is pressure to return to business basics. Good governance. Real revenues. Careful planning. Cost control. Profitability. Stakeholders, investors, regulators, customers, and others are demanding it. But meeting these demands is challenging. Among other things, senior management is faced with the task of deciding which ventures and initiatives should be funded, and which should be curtailed or abandoned.

There are a variety of methods for making such decisions. Because of their familiarity with such methods, financial managers are increasingly called upon for advice and guidance. For some time, financial managers' responsibilities have extended beyond preparing financial reports and budgets to include evaluating and approving funding for initiatives that help move the organization toward its strategic objectives. These include initiatives involving information technology, such as implementing Business Intelligence (BI) software solutions.

Sage have released Sage 200 Business Intelligence (BI), a highly advanced and sophisticated product designed for larger companies with complex reporting demands. Prosys Analytics 200 is aimed at the lower cost of ownership and for ease of use. A tool allowing you to extract data from your systems and model the information in a fashion that displays the key facts you seek.

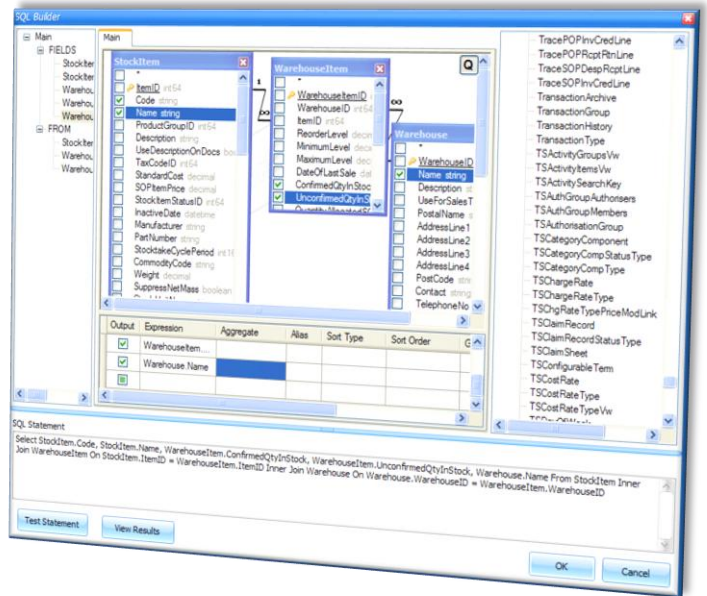
Prosys Analytics 200 will integrate into Sage 200 and allow you to build data models on any element of the Sage database, whether presenting Sales Order figures based on analysis codes broken down per month, per customer or product, or to simply display current stock levels based on location, you'll find this tool will help take the data within your Sage 200 application to a different level.



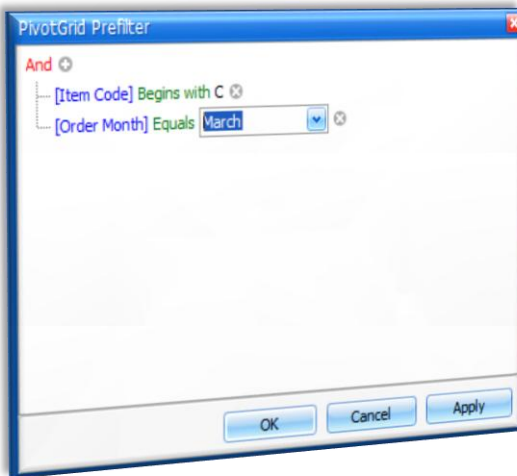


- Integrates directly into Sage 200 menu structure.
- Query data from the currently accessed Sage 200 company database. Even tables created by other Business Partners or 3rd Party Sage developers.
- Query data from XML files.
- Query data from SQL Server OLAP cubes.
- Create and build new analysis packages via an intuitive wizard.

- Build data queries using a report designer style tool.
- Save analysis packages allowing other users to load and view the results
- Manipulate and summarise your data using filters or altering the column positions.
- Breakdown your data into sub-groups based on field.
- Customise the columns display formats, i.e. breakdown dates by month, year, quarter, day of week.
- Create summaries by Sum, Average, Count, Max, Min, Variance and more.
- Display the top <n> results.
- Create computed values based on other columns.



- Customise the display format of cells based on user defined conditions.
- Export the displayed data to an Excel file, HTML file, PDF file or an XML file
- Print your grid layouts.
- Chart your data as a 2D or 3D Bar, Line, Scatter, Point and more.
- Customise your charts
- Chart your data by simply highlighting and selecting the cell values you wish to plot.
- Export your charts to various image formats.
- And much more...



Pricing		
Single User Licence	99 User Licence	Annual Maintenance & Support
£500	£1000	20% of products purchased

* prices exclude VAT

Maintenance and support ensures you are entitled to enhanced upgrades to the software as and when released, and our support staff will help you with everyday queries which you might experience in running the system. This support service will usually be provided by telephone although we may also use remote connection facilities where appropriate, perhaps to provide you with on-screen guidance.

Please call Prosys Computing on (029) 20494745 or email sales@prosyscomputing.co.uk to arrange a demonstration or receive an evaluation version.

